

| | |
|-------------------------------------|---|
| What is TimeToPhoto?..... | 2 |
| Contact Us..... | 3 |
| Quick start | 4 |
| Placing information on photos | 5 |
| Renaming and sorting photos..... | 6 |
| General program settings | 8 |

What is TimeToPhoto?

Back in the film days, many point-and-shoot cameras had an extremely useful feature most modern digital compacts are regrettably lacking. The feature was called Quartz or Time-Stamping, depending on the manufacturer. The idea was clear and simple: time-stamp every frame with the exact date the photo was taken.

Back then, only a few expensive models were equipped with that useful feature. Today, all digital cameras, even the cheapest models, record the date and time each picture is taken, storing this information somewhere in the file. While you can access this information from your computer if you are persistent enough, there is no way to tell the date when and where the picture was taken after it's been printed.

Fortunately, there is a perfect solution of this problem. TimeToPhoto can time-stamp your digital pictures completely automatically by putting the camera's date stamp on your photos. Better yet, unlike stamped film, it leaves the non-stamped originals intact, satisfying the purists as well as the rest of us.

Fully automatic operation is possible, as TimeToPhoto is able to access the hidden information about your digital pictures that is stored in EXIF format. The exact shooting date is stored there. You can time-stamp all photos at once, specifying your own font, position, and color of the date stamp. In addition, you can stamp pictures with extras such as GPS information or the name of the place pictured, the file name, or just about anything else - such as the names and ages of your kids at that time!

If you value your memories, if you want to know when and where your pictures were taken many years after, or if you simply want to send pictures of your kids accompanied with their names and ages to your relatives, download your free demo version of TimeToPhoto now: <http://avpsoft.com/products/timetophoto/>

Key features:

- Fully automatic processing
- An ability to add date, GPS coordinates, file name or any text to your photographs
- Fully adjustable position, font, color and size of the stamp
- Automatic renaming and sorting of photos using templates
- All original photos will be saved – the software creates and modifies copies only.

Contact Us

Feel free to contact us. All registered users of TimeToPhoto get full e-mail technical support. You can also ask any questions about TimeToPhoto registration and submit your suggestions and ideas. If you have some interesting thoughts concerning the future development of TimeToPhoto, you are very welcome.

General – info@avpsoft.com.

Technical support – support@avpsoft.com.

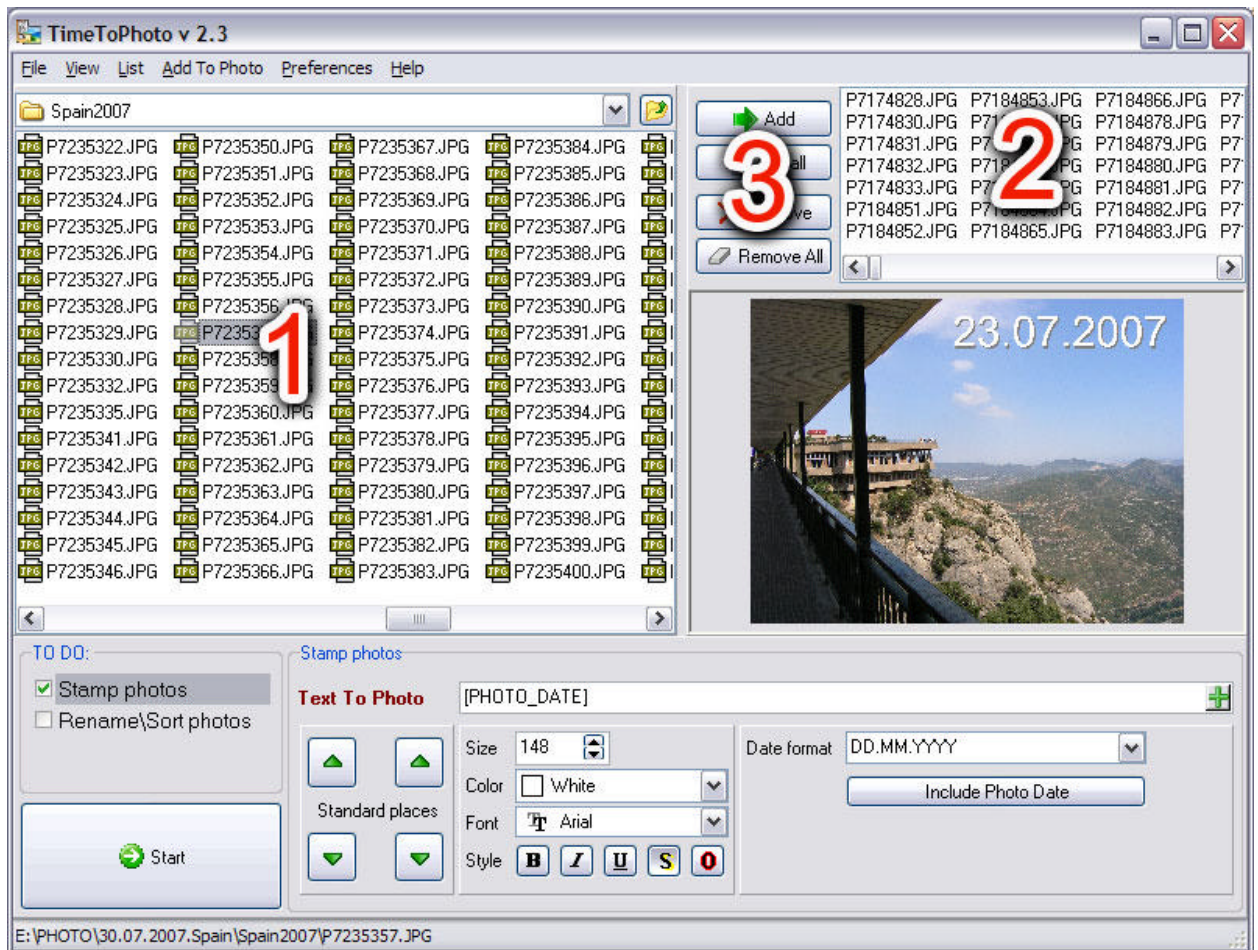
Purchasing questions – sales@avpsoft.com.

Webmaster – webmaster@avpsoft.com.

Our affiliate program – <http://avpsoft.com/partners>.

Visit our site for latest news, new versions, updates and subscription to our newsletters: <http://avpsoft.com>.

Quick start



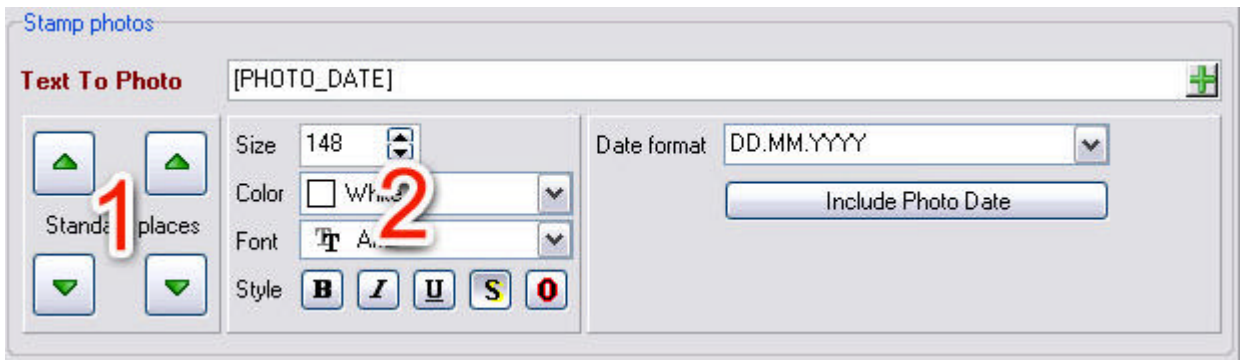
1. Use the explorer (1) to find the necessary photos and add them to the processing list (2) using the ADD or ADD ALL buttons (3).
2. Select any photo from the list and (3), configure its main stamp parameters (Size, Color, Font, Style) and adjust the stamp position by clicking the left mouse button in the desired location on the photo.
3. If necessary, edit the TEXT TO PHOTO field. This is a stamp template – all tags in square brackets will be replaced by specific values for each photo. For instance, in TEXT TO PHOTO = "Birthday [PHOTO_DATE]", each [PHOTO_DATE] will be replaced by the date and time the picture was taken according to the format selected in the DATE FORMAT field.
4. Press START and select the folder TimeToPhoto will use for storing processed photos.
5. Once photo processing is complete, TimeToPhoto will open the folder containing processed photos and you will be able to print them, send them by email, etc...

Placing information on photos

To make TimeToPhoto add stamps to your photos, check the STAMP PHOTOS box in the TO DO list.



The STAMP PHOTOS configuration panel allows you to adjust stamping options.



You can set the position of the stamp by clicking the left mouse button in an arbitrary position of a photo or by choosing one of the default corner positions using the STANDARD PLACES panel (1)

You can also edit the SIZE, COLOR, FONT, STYLE fields to modify the corresponding parts of the stamp. (2)

6. The stamp text can be edited in the TEXT TO PHOTO field. This is a stamp template – all the tags in square brackets will be replaced by photo-specific values. For instance, in TEXT TO PHOTO = "Birthday [PHOTO_DATE]", each [PHOTO_DATE] will be replaced by the date and time the picture was taken according to the format selected in the DATE FORMAT field.

Corresponding tags can be inserted into the field using the context menu or the ADD TO PHOTO command of the main menu.

The DATE FORMAT field defines the format of the date added to photos.

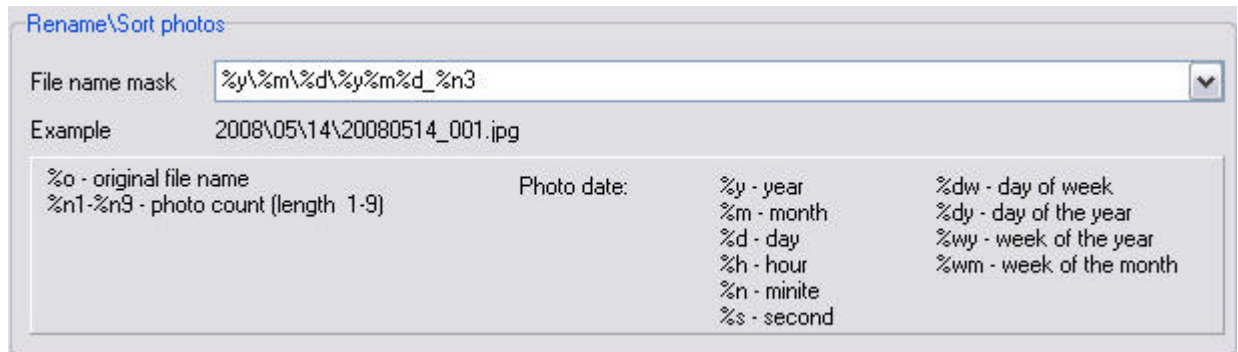
The format of the GPS position can be configured in the main program settings window.

Renaming and sorting photos

To make TimeToPhoto rename and/or sort files according to a predefined template during photo processing, check the RENAME/SORT PHOTOS box in the TO DO list.



You can use TimeToPhoto to automatically rename photos and sort them into different folders depending on the day the photos were made on.



The FILE NAME MASK field is a template that can be used to define the name of each photo. The following macros can be used in the template:

General:

%o - original file name

%n1-%n9 - photo count (length 1-9)

Date-specific:

%y - year

%m - month

%d - day

%h - hour

%n - minute

%s - second

%dw - day of week
 %dy - day of the year
 %wy - week of the year
 %wm - week of the month

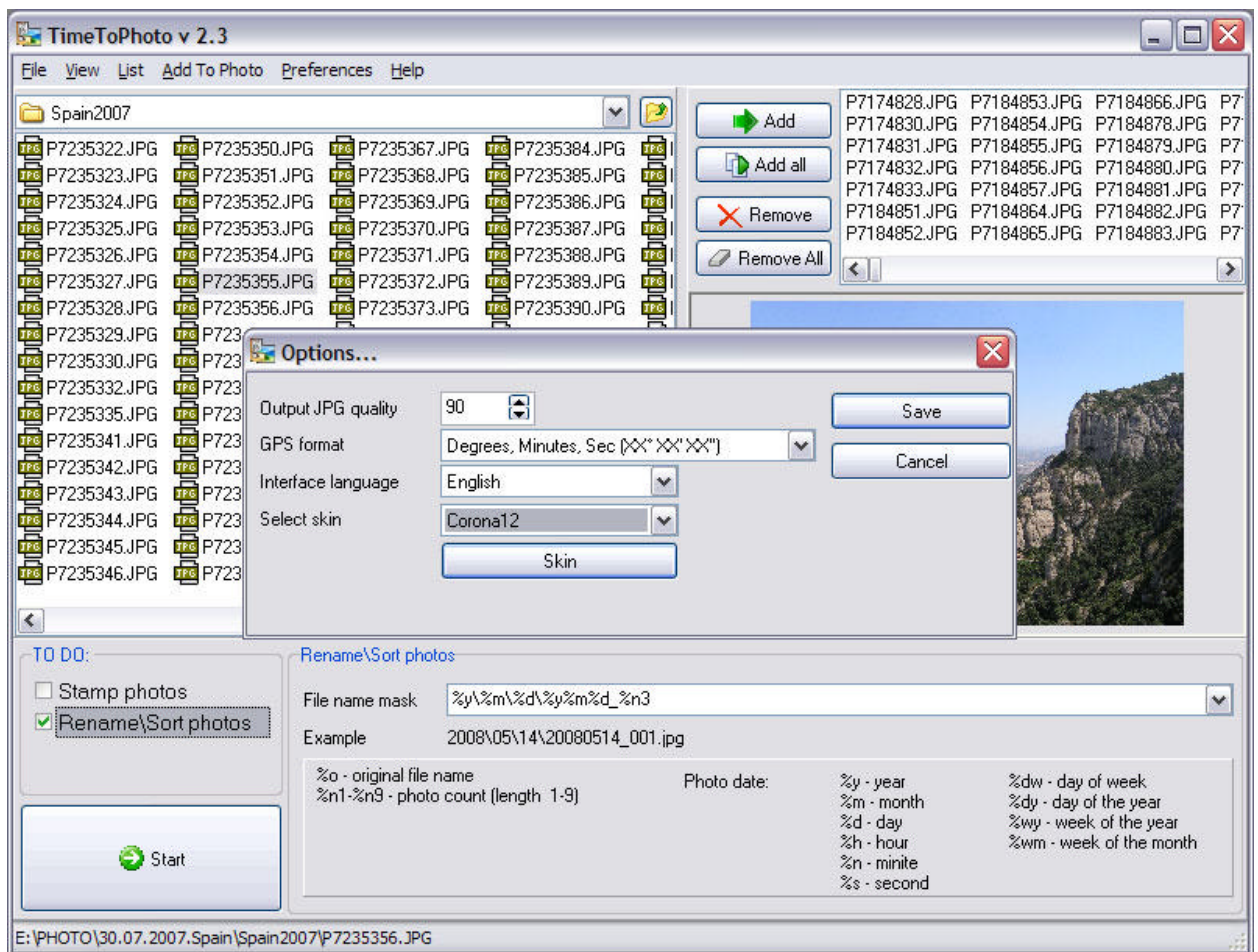
The FILE NAME MASK field contains a set of predefined templates, but you can define your own template manually.

Examples:

For instance, a picture was taken on 01.30.2008 and its name is P3202311.jpg

| Template | Name of the file after renaming |
|---------------------|--|
| %o_timestamp | P3202311_timestamp.jpg |
| %y-%m-%d_%n3 | 2008-01-30_001.jpg |
| %y\%m\%d\%y%m%d_%n3 | 2008\01\30\20080130_001.jpg That means that the software will create the 2008\01\30\ folder structure and save all the photos made on the same day into a single folder |
| %y\%m\%o | 2008\01\P3202311.jpg Sorting by month |
| %y\%o | 2008\P3202311.jpg Sorting by year |

General program settings



You can set the following parameters in the main program settings window:

OUTPUT JPG QUALITY – compression ratio of the output JPG file. To apply a stamp, TimeToPhoto opens a JPG file, adds the stamp and saves the image to a new JPG file using this parameter for data compression. The lower this parameter is, the larger the output file will be (and vice versa – high compression ratios result in smaller files and worse quality). The default value is 90%.

GPS FORMAT – defines the format of the GPS position information to be added to photos.

SELECT SKIN/UNSKIN – the software allows you to use skins. If you want to reset the interface, press the UNSKIN button.

Thank you for your interest in our software.